



CALIFORNIA DEPARTMENT OF CORRECTIONS AND REHABILITATION  
CALIFORNIA CORRECTIONAL HEALTH CARE SERVICES



# MENTAL HEALTH BED NEED STUDY

BASED ON  
**SPRING 2026 POPULATION PROJECTIONS**

**MAY 2026**  
CDCR OFFICE OF RESEARCH

IN CONSULTATION WITH  
JOHN MISENER, PRINCIPAL, STEPHENS CONSULTING PARTNERS

## TABLE OF CONTENTS

<b>TABLE OF CONTENTS.....</b>	<b>1</b>
<b>EXECUTIVE SUMMARY .....</b>	<b>2</b>
MALE PROGRAMS .....	2
FEMALE PROGRAMS .....	2
<b>PURPOSE AND SCOPE OF THE STUDY .....</b>	<b>3</b>
<b>METHODOLOGY.....</b>	<b>3</b>
BASIC METHODOLOGY .....	3
METHODOLOGY ENHANCEMENT .....	4
<b>DATA USED.....</b>	<b>6</b>
<b>SPRING 2026 CDCR POPULATION PROJECTIONS .....</b>	<b>6</b>
MALE POPULATION .....	7
FEMALE POPULATION .....	8
<b>MALE PROGRAM FORECASTS .....</b>	<b>9</b>
ACUTE PSYCHIATRIC PROGRAM (APP) .....	9
INTERMEDIATE CARE FACILITY (ICF) – HIGH CUSTODY PROGRAM .....	10
ICF – LOW CUSTODY PROGRAM .....	11
MENTAL HEALTH CRISIS BED (MHCB) .....	12
ENHANCED OUTPATIENT PROGRAM (EOP) – GENERAL POPULATION (EOP-GP) .....	13
RESTRICTED HOUSING UNIT ENHANCED OUTPATIENT PROGRAM - RHE .....	14
<b>FEMALE PROGRAM FORECASTS .....</b>	<b>16</b>
ACUTE AND INTERMEDIATE INPATIENT PROGRAM (APP/ICF) .....	16
MENTAL HEALTH CRISIS BEDS (MHCB) .....	17
ENHANCED OUTPATIENT PROGRAM (EOP) – GENERAL POPULATION (EOP-GP) .....	17
RESTRICTED HOUSING UNIT ENHANCED OUTPATIENT PROGRAM (RHE).....	18
CORRECTIONAL CLINICAL CASE MANAGEMENT SYSTEM (CCCMS) .....	18
<b>CONCLUSION .....</b>	<b>19</b>

## EXECUTIVE SUMMARY

Growth in RHE and CCCMS for both male and female programs pushed the total bed need higher for the first half of FY 2026. Total Inpatient census was stable (0.4% higher) and bed need dropped for the female programs. The California Department of Corrections and Rehabilitation (CDCR) Spring 2026 total mental health bed need is higher than the Fall 2025 study for FY 2027 (by 1,300 beds or 3.8%). Projections are higher for males (3.8%) and females (increase of 56 beds or 2.6%) when comparing bed need for FY 2027 (at 12/31/26).

### MALE PROGRAMS

The Spring 2026 Mental Health Bed Need Study projections, at the midpoint of FY 2027 (12/31/26), forecasts a higher bed need compared to the Fall 2025 study for: Restricted Housing Unit Enhanced Outpatient Program (RHE) (6.8%); CCCMS (4.8%); APP (2.2%); EOP-GP (1.1%); and ICF – Low Custody (7.8%).

MHCB exhibited no significant change. Need for ICF-High beds dropped (3.6%). Male total inpatient programs increased by 5 beds or 0.4%.

### FEMALE PROGRAMS

The Spring 2026 Mental Health Bed Need Study projections for FY 2027 (at 12/31/26) forecast program increases in: RHE (33.3%) and CCCMS (3.3%). Acute/ICF dropped (16.4%). There were no significant changes for MHCB and EOP-GP.

Overall female inpatient bed need decreased by 9 beds (12.3%).

Level of Care	PROJECTIONS TO FY 2027 (at 12/31/26)			
	Spring 2026 Study	Fall 2025 Study	Difference from Fall 2025	% Change from Fall 2025
<b>MALE</b>				
APP	232	227	5	2.2%
ICF - High	459	476	(17)	-3.6%
ICF - Low	236	219	17	7.8%
MHCB	310	310	0	0.0%
EOP-GP	7,237	7,157	80	1.1%
RHE	849	795	54	6.8%
CCCMS	24,299	23,194	1,105	4.8%
<b>Totals</b>	<b>33,622</b>	<b>32,378</b>	<b>1,244</b>	<b>3.8%</b>
<b>FEMALE</b>				
Acute/ICF	46	55	(9)	-16.4%
MHCB	19	19	0	0.0%
EOP-GP	165	165	0	0.0%
RHE	12	9	3	33.3%
CCCMS	1,948	1,886	62	3.3%
<b>Totals</b>	<b>2,190</b>	<b>2,134</b>	<b>56</b>	<b>2.6%</b>
<b>TOTAL MHS POP</b>	<b>35,811</b>	<b>34,512</b>	<b>1,300</b>	<b>3.8%</b>

*Projection values are rounded to the nearest whole number.*

## PURPOSE AND SCOPE OF THE STUDY

The purpose of the Mental Health Bed Need Study is to guide future facility planning efforts. The forecasts are provided by level of care and gender.

This Spring 2026 Study uses the Spring 2026 Population Projections developed under the California Department of Corrections and Rehabilitation's (CDCR's) contract with Stephens Consulting Partners.

This Spring 2026 study continues to apply similar approaches and methodologies begun in and expanded since the Fall 2011 Study. These methodologies are based in part on the effort of Health Care Placement Oversight Program (HCPOP) staff in collecting additional data specifically related to classification level and analyses of pending lists. HCPOP expanded their audit of census and pending lists by classification level to a weekly basis. John Misener, a Principal with Stephens Consulting Partners, continues as the lead forecaster for the projections in this report.

This Study compares the Spring 2026 bed need projections with the Fall 2025 study forecasts.

## METHODOLOGY

### BASIC METHODOLOGY

The fundamental modeling approach for the Study is the Census Rate method, which is a population-based model. This method entails developing forecasts of the target populations as well as census rates for those populations (based on average daily census per 1,000 incarcerated individuals) for each level of care. This basic model uses the following variables:

1. CDCR Total Population (actual and projected)
2. Historical Program Census Counts (weekly)
3. Historical Program Pending List Counts, if any (weekly)

A Census Rate Adjustment Factor (CRAF) was applied to previous forecasts (and may still be applied to the female forecasts) when the census rate exhibits an increase from the previous year to simulate future increases. The CRAF is calculated to indicate average annual change over a 2-5-year period. However, it is not always applied, such as when the rate exhibits a decline, is erratic, or is not expected to continue to increase based on other information related to operations (e.g., indication of length of stay reduction, improvements in pending list management, etc.).

The goal of the Study is to address the adequacy of the capacities in each program so that those who are referred on the basis of a clinical judgment will not encounter barriers caused by inadequate supply. Occupancy standards were selected to ensure that, on average, capacities would not be exceeded in the future given the forecasted bed requirements. While the inpatient community standard is about 80

percent, the Division of Health Care Services applies a 90 percent occupancy standard to all inpatient programs, and a 95 percent standard to the outpatient programs (excluding CCCMS). The lower occupancy standard increases the probability of having an empty bed available.

## METHODOLOGY ENHANCEMENT

Since the Fall 2011 Study, the following two enhancements were applied to the basic methodology:

1. *For the Male MHCB and EOP-GP programs a “trued” bed need is calculated. This is an adjustment to the official forecasted bed need that eliminates “double-counting.”*

HCPOP conducts an analysis of pending lists in order to determine current housing/level of care of those on the pending lists so that adjustments could be shown to eliminate “double-counting.” For example, an analysis of the APP pending list revealed that a substantial percentage of the incarcerated-patients were residing in a MHCB. A separate reporting of the “trued” bed need is shown in the MHCB forecast with the observation that the beds used by those incarcerated-patients on the pending list could be freed-up once adequate APP capacities become available in the future.

2. *For Male programs, determined classification level-specific census rates to better adjust for anticipated changes in the classification level mix as a result of Statutes 2011, chapter 15 (Assembly Bill 109: Public Safety Realignment Law).*

HCPOP conducts a weekly audit that matches the incarcerated-patients resident in the program to their classification level (based on placement score). The distribution by level is averaged for the number of data points during the audit period (e.g., 26 or 27 dates for half the FY; 52 dates for the full FY). It is assumed that the program Average Daily Census (Total Census plus Pending List) would be allocated in the same proportion, resulting in estimated “classification level-specific” census totals, which are then applied to the CDCR population as of the data period mid-point (e.g., September 30 for half the FY; December 31 for the full FY) to obtain “classification level-specific” census rates. The census rates are then applied to the CDCR projections by level to generate future census estimates. Blended census rates per 1,000 are calculated for each forecast year and applied to the model. The use of these “classification level-specific” census rates is designed to ensure sufficient bed need despite large drops in the projected population due to various population reduction measures. This more precise methodology was used for forecasting the Male programs because the department does not project the Female population by level. Therefore, CRAFs are still used for forecasting the Female programs, as appropriate.

The male programs for Spring 2026 reflect a high utilization of services by Level IV incarcerated individuals, especially for Restricted Housing Unit (RHE), ICF-High Custody, APP, and MHCB:

Spring 2026				
MALE PROGRAMS	Level I	Level II	Level III	Level IV
APP	5.4%	25.8%	12.2%	56.7%
ICF-High	3.2%	21.7%	11.4%	63.7%
ICF-Low	8.8%	49.1%	14.7%	27.4%
MHCB	6.6%	28.2%	12.4%	52.7%
EOP-GP	4.0%	39.3%	13.5%	40.6%
RHE	1.2%	8.6%	9.7%	80.5%
CCCMS	7.0%	44.3%	15.0%	26.7%

*\* EOP-GP and CCCMS do not add up to 100% due to the inmates in RCs.*

## DATA USED

Note: Beginning in November 2023, CDCR introduced the Restricted Housing Unit grouping of the following historical programs: PSU (Psychiatric Services Unit), ASU (Administrative Segregation Unit), LTRH and STRH (Long and Short Term Restricted Housing), and the SHU (Security Housing Unit). As with the Fall 2025 study, the combined Restricted Housing Unit programs introduced in 2023 were forecasted. Also, as with the Fall study, utilization of inpatient psychiatric services for males with condemned sentences are combined with other ICF-High inpatients.

This Spring 2026 Study uses the following data:

- The Spring 2026 Population Projections through 06/30/2030, from the CDCR Office of Research, by gender and level of housing for males. These projections include the estimated impact of legislation, policy, and process changes in effect through December 31, 2025.
- July 2025 – December 2025 census and pending list data, by program, provided by HCPOP.
- HCPOP analysis of male incarcerated-patients by Classification Level (based on placement score):
  - Twenty-six weekly audit dates for July 2025 – December 2025 were used for all inpatient, EOP-GP, RHE, and CCCMS Male programs to match incarcerated patients to placement scores and classification levels.
- HCPOP analysis of pending lists for APP, ICF, and MHCB.

## SPRING 2026 CDCR POPULATION PROJECTIONS

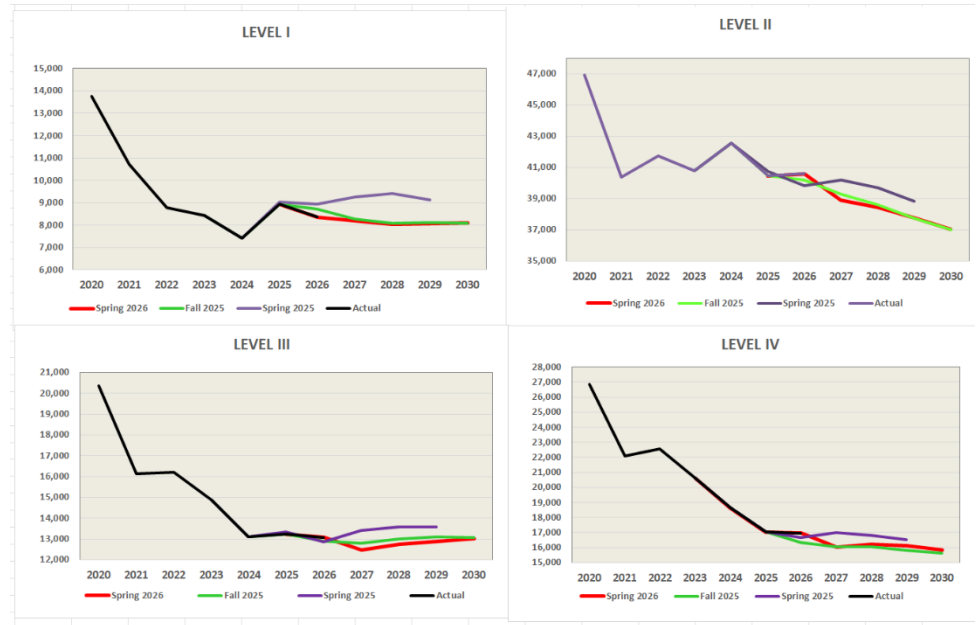
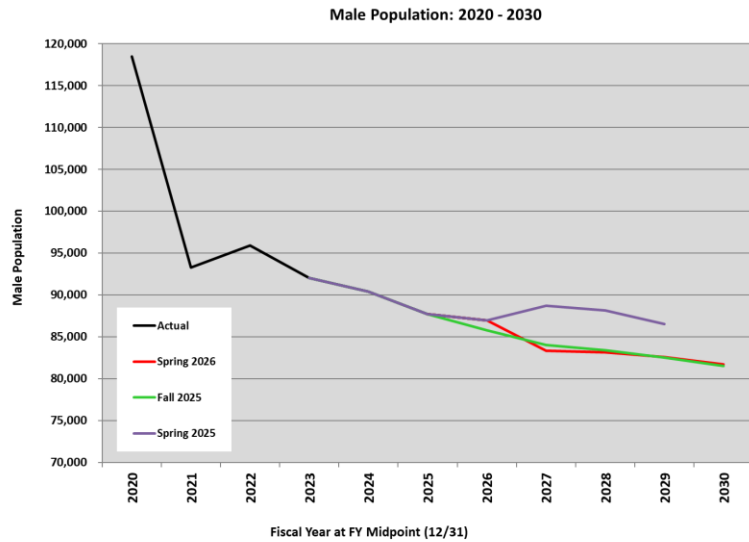
Population data inputs required for the Spring 2026 Mental Health Bed Need Study were provided to Stephens Consulting Partners by the CDCR Office of Research (Research) on February 25, 2026.

For more information related to CDCR's Office of Research Population Projections, please visit:

<https://www.cdcr.ca.gov/research/population-reports>

## MALE POPULATION

The Spring 2026 CDCR male projections forecast a very similar pattern of population change as the prior Fall 2025 forecast. None of the annual midpoints are greater than a 0.8% difference. By FY 2030 the male population is projected to drop 1.8% over the forecast years. Note that there is a large 4.1% drop forecast between FY 2026 – FY 2027 affecting the resulting census projections in those years.



**Change by Security Level  
Spring 2026 vs. Fall 2025**

	2027	2028	2029	2030
<b>Level IV</b>	<b>0.1%</b>	<b>1.2%</b>	<b>1.9%</b>	<b>1.3%</b>
<b>Level III</b>	<b>-2.4%</b>	<b>-1.9%</b>	<b>-1.5%</b>	<b>-0.4%</b>
<b>Level II</b>	<b>-1.0%</b>	<b>-0.4%</b>	<b>0.1%</b>	<b>0.0%</b>
<b>Level I</b>	<b>-0.7%</b>	<b>-1.0%</b>	<b>-0.6%</b>	<b>-0.1%</b>

**Total Male Population Spring 2026 vs Fall 2025\***

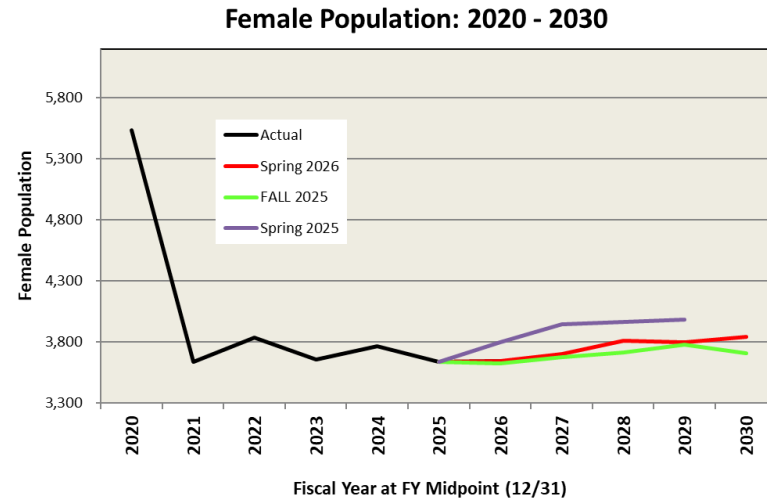
	2027	2028	2029	2030
Spring 2026	83,378	83,185	82,608	81,693
Fall 2025	84,058	83,436	82,524	81,559
Variance	(680)	(251)	84	134
% Variance	-0.8%	-0.3%	0.1%	0.2%

\* as of midpoint of the fiscal year (12/31)

## FEMALE POPULATION

The Spring 2026 population projections for females are similar but slightly higher in FY 2027 by 0.8% compared to the Fall 2025 projections. The new series of projections average 1.8% higher than the Fall 2025 study through the forecast years.

Total Female Population Spring 2026 vs Fall 2025*				
	2027	2028	2029	2030
Spring 2026	3,702	3,807	3,795	3,842
Fall 2025	3,674	3,713	3,776	3,709
Variance	28	94	19	133
% Variance	0.8%	2.5%	0.5%	3.6%
* as of midpoint of the fiscal year (12/31)				



## MALE PROGRAM FORECASTS

### ACUTE PSYCHIATRIC PROGRAM (APP)

TABLE 1. MALE APP FORECAST TABLE

APP - MALE	--- ACTUAL ---										Jul-Dec	--- FORECAST ---				
Fiscal Year Ending (June 30)	2016	2017	2018	2019	2020	2021	2022	2023	2024	2025	2026	2026	2027	2028	2029	2030
CDCR Total Male Population	122,540	123,213	124,414	121,939	118,494	93,311	95,890	92,051	90,421	87,721	87,102	86,950	83,378	83,185	82,608	81,693
Census Rate	2.60	3.01	2.84	2.21	3.53	3.11	3.49	3.59	3.00	2.44	2.51	2.52	2.50	2.52	2.52	2.51
Avg Program Census	291.5	334.6	332.0	253.9	386.5	278.8	316.8	313.3	259.1	193.8	200.0					
Avg Pending List	27.5	36.0	21.2	15.3	31.3	11.0	17.5	17.4	12.3	14.0	18.6					
Total Avg Daily Census (ADC)	319.0	370.6	353.2	269.2	417.8	289.8	334.3	330.7	271.4	207.8	218.6	219.0	208.6	209.6	208.2	205.4
Bed Need (90% Occ)	354	412	392	299	464	322	371	367	302	231	243	243	232	233	231	228
Forecast based on Fall 2025												231	227	226	223	220
Forecast based on Spring 2025												234	239	237	233	
Forecast based on Fall 2024												283	282	276	271	

The male acute licensed beds averaged 492 for FY 2026. The Spring 2026 study calculated an average bed need (at 90%) of 243 for FY 2026, which is 12 beds higher than projected in the Fall study. The Spring 2030 forecast averages 8 beds or 3.6% higher than the Fall study.

TABLE 2. MALE APP DISTRIBUTION BY CLASSIFICATION LEVEL TABLE

Classification Level	Distribution %	Est. Total ADC Distribution	CDCR Population @ 9/30/25	Census Rates (Spring 2026)	% Change Spring '26 - Fall '25	Census Rates (Fall 2025)	Census Rates (Fall 2024)	Census Rates (Fall 2023)	Census Rates (Fall 2022)	Census Rates (Fall 2021)	Census Rates (Fall 2020)	Census Rates (Fall 2019)	Census Rates (Fall 2018)	Census Rates (Fall 2017)	Census Rates (Fall 2016)	% Change Spring 26 - Fall 16
Level IV	56.7%	124	16,808	7.37	9.8%	6.71	8.27	9.66	8.95	7.89	8.24	4.99	6.38	6.89	5.63	30.8%
Level III	12.2%	27	13,292	2.01	-8.0%	2.18	2.58	2.64	2.65	2.46	2.94	2.28	2.48	2.48	2.39	-16.2%
Level II	25.8%	56	40,731	1.38	-5.6%	1.46	1.68	1.86	1.90	1.59	2.32	1.40	1.89	2.01	1.80	-23.3%
Level I	5.4%	12	8,379	1.40	5.2%	1.33	1.62	1.92	1.16	1.06	2.04	1.04	1.63	1.56	1.90	-26.3%
<b>Total</b>	<b>100.0%</b>	<b>219</b>	<b>87,102</b>	<b>2.51</b>	<b>2.8%</b>	<b>2.44</b>	<b>3.10</b>	<b>3.59</b>	<b>3.49</b>	<b>3.11</b>	<b>3.53</b>	<b>2.21</b>	<b>2.84</b>	<b>3.01</b>	<b>2.60</b>	<b>-3.6%</b>

## INTERMEDIATE CARE FACILITY (ICF) – HIGH CUSTODY PROGRAM

TABLE 3. MALE ICF-HIGH CUSTODY FORECAST TABLE

ICF-HIGH CUSTODY - MALE	--- ACTUAL ---											Jul-Dec	--- FORECAST ---				
Fiscal Year Ending (June 30)	2016	2017	2018	2019	2020	2021	2022	2023	2024	2025	2026	2026	2027	2028	2029	2030	
CDCR Total Male Population	122,540	123,213	124,414	121,939	118,494	93,311	95,890	92,051	90,421	87,721	87,102	86,950	83,378	83,185	82,608	81,693	
Census Rate	4.97	5.72	5.23	4.97	6.20	7.31	6.48	6.63	5.80	5.14	4.97	5.00	4.96	5.00	5.00	4.99	
Avg Program Census (CSH)	84.4	91.2	139.7	149.7	147.9	112.0	106.9	75.3	40.2	35.5	60.1						
Avg Program Census (VPP)	298.6	333.4	255.6	255.5	305.3	345.5	268.2	245.5	243.7	207.9	235.3						
Avg Program Census (ASH)	207.8	208.9	222.7	176.3	229.8	199.8	215.2	226.3	205.9	163.9	115.0						
Avg Pending List	18.7	70.8	33.1	24.1	75.1	24.9	31.4	62.8	16.9	18.7	22.8						
Total Avg Daily Census (ADC)	609.5	704.3	651.1	605.7	758.1	682.2	621.8	610.0	506.7	437.6	433.2	434.4	413.2	415.8	413.2	407.3	
Bed Need (90% Occ)	677	783	723	673	842	758	691	678	563	486	481	483	459	462	459	453	
												Forecast based on Fall 2025	485	476	475	469	464
												Forecast based on Spring 2025	492	503	498	490	
												Forecast based on Fall 2024	541	539	527	518	

TABLE 4. MALE ICF-HIGH CUSTODY DISTRIBUTION BY CLASSIFICATION LEVEL TABLE

CDCR operated an average of 538 beds in celled housing at ICF programs for male incarcerated patients. The Spring 2026 study indicates an average bed need of 483 for FY 2026 (at 90% occupancy). This is a 2 bed need decrease (-0.4%) than projected in the Fall study. Bed need in the forecast years averages 11 beds lower (-2.3%) than forecasted in the Fall study. The model assumes constant “classification specific” (I-IV) census rates.

Classification Level	Distribution %	Est. Total ADC Distribution	CDCR Population @ 9/30/25	Census Rates (Spring 2026)	% Change Spring '26 - Fall '25	Census Rates (Fall 2025)	Census Rates (Fall 2024)	Census Rates (Fall 2023)	Census Rates (Fall 2022)	Census Rates (Fall 2021)	Census Rates (Fall 2020)	Census Rates (Fall 2019)	Census Rates (Fall 2018)	Census Rates (Fall 2017)	Census Rates (Fall 2016)	% Change Spring 26 - Fall 16
Level IV	63.7%	276	16,808	16.4	-8.1%	17.8	19.3	20.6	19.9	22.7	18.2	12.8	13.4	15.2	13.1	25.1%
Level III	11.4%	50	13,292	3.7	7.3%	3.5	3.9	4.1	4.0	4.2	4.9	5.0	5.2	5.3	4.8	-21.7%
Level II	21.7%	94	40,731	2.3	5.2%	2.2	2.4	2.8	2.4	2.4	2.6	2.5	2.6	2.5	2.4	-2.3%
Level I	3.2%	14	8,379	1.6	16.7%	1.4	1.7	1.3	0.9	1.3	1.7	1.6	1.5	1.5	1.8	-6.7%
<b>Total</b>	<b>100.0%</b>	<b>433</b>	<b>87,102</b>	<b>5.0</b>	<b>-3.3%</b>	<b>5.1</b>	<b>5.8</b>	<b>6.6</b>	<b>6.5</b>	<b>7.3</b>	<b>6.2</b>	<b>5.0</b>	<b>5.2</b>	<b>5.7</b>	<b>5.0</b>	<b>0.0%</b>

## ICF – LOW CUSTODY PROGRAM

TABLE 5. MALE ICF-LOW CUSTODY FORECAST TABLE

ICF-LOW CUSTODY - MALE	--- ACTUAL ---											Jul-Dec	--- FORECAST ---				
Fiscal Year Ending (June 30)	2016	2017	2018	2019	2020	2021	2022	2023	2024	2025	2026	2026	2027	2028	2029	2030	
CDCR Total Male Population	122,540	123,213	124,414	121,939	118,494	93,311	95,890	92,051	90,421	87,721	87,102	86,950	83,378	83,185	82,608	81,693	
Census Rate	2.61	2.70	2.81	2.33	3.17	2.78	2.15	1.43	1.63	2.34	2.55	2.55	2.54	2.55	2.54	2.54	
Avg Program Census (CSH)	48.5	44.4	48.4	47.2	44.7	34.5	21.2	25.6	41.4	44.4	43.7						
Avg Program Census (VPP)	73.4	73.5	69.5	75.4	74.2	50.0	48.0	27.1	33.1	24.5	21.0						
Avg Program Census (ASH)	197.9	206.6	199.1	140.8	225.1	163.7	129.2	72.0	79.8	120.8	137.9						
Avg Pending List		7.9	33.0	20.4	32.7	11.4	7.5	7.0	19.3	19.4	19.7						
Total Avg Daily Census (ADC)	319.7	332.3	350.0	283.8	376.6	259.5	205.9	131.7	173.5	209.0	222.3	221.8	212.2	211.9	210.2	207.5	
Bed Need (90% Occ)	355	369	389	315	418	288	229	146	193	232	247	246	236	235	234	231	
Forecast based on Fall 2025												224	219	217	214	211	
Forecast based on Spring 2025												223	228	226	222		
Forecast based on Fall 2024												158	156	153	149		

TABLE 6. MALE ICF-LOW CUSTODY DISTRIBUTION BY CLASSIFICATION LEVEL TABLE

Classification Level	Distribution %	Est. Total ADC Distribution	CDCR Population @ 9/30/25	Census Rates (Spring 2026)	% Change Spring '26 - Fall '25	Census Rates (Fall 2025)	Census Rates (Fall 2024)	Census Rates (Fall 2023)	Census Rates (Fall 2022)	Census Rates (Fall 2021)	Census Rates (Fall 2020)	Census Rates (Fall 2019)	Census Rates (Fall 2018)	Census Rates (Fall 2017)	Census Rates (Fall 2016)	% Change Spring 26 - Fall 16
Level IV	27.4%	61	16,808	3.6	10.6%	3.3	1.7	1.5	2.5	2.8	3.5	2.2	3.2	2.6	2.3	58.4%
Level III	14.7%	33	13,292	2.5	20.5%	2.0	1.6	0.9	1.7	2.1	2.9	2.5	3.0	2.8	2.7	-8.1%
Level II	49.1%	109	40,731	2.7	2.8%	2.6	2.0	1.9	2.6	3.3	3.8	3.0	3.3	3.8	3.7	-27.8%
Level I	8.8%	20	8,379	2.3	20.5%	1.9	0.9	0.9	1.7	2.8	3.1	1.9	2.4	1.3	2.0	14.4%
Total	100.0%	222	87,102	2.6	8.9%	2.3	1.6	1.4	2.1	2.8	3.2	2.3	2.8	2.7	2.6	-2.2%

The Department of State Hospitals (DSH) currently operates 306 unlocked ICF dormitory beds at state hospital facilities and CDCR operates 64 locked ICF dormitory beds, totaling 370 ICF-Low Custody beds for male CDCR incarcerated-patients. The Spring 2026 study calculated the average bed need of 246 for FY 2026, which is a 22-bed increase from the Fall study estimate. The forecasted bed need averages 19 beds higher over the forecast years. The model assumes constant “classification specific” (I-IV) census rates.



## ENHANCED OUTPATIENT PROGRAM (EOP) – GENERAL POPULATION (EOP-GP)

TABLE 9. MALE EOP-GP FORECAST TABLE

EOP-GP - MALE	--- ACTUAL ---										Jul-Dec	--- FORECAST ---				
Fiscal Year Ending (June 30)	2016	2017	2018	2019	2020	2021	2022	2023	2024	2025	2026	2026	2027	2028	2029	2030
LEVEL I CDCR Male Population	11,741	11,659	13,193	14,416	13,751	10,722	8,793	8,428	7,420	8,941	8,379	8,362	8,205	8,022	8,070	8,094
LEVEL I Census Rate	16.94	16.94	20.00	22.28	24.48	21.26	30.49	35.39	47.55	34.09	34.30	34.30	34.30	34.30	34.30	34.30
LEVEL I TOTAL ADC	198.9	197.5	263.8	321.2	336.6	228.0	268.1	298.2	352.8	304.8	287.4	286.8	281.4	275.1	276.8	277.6
LEVEL I Bed Need (95% Occ)	209	208	278	338	354	240	282	314	371	321	303	302	296	290	291	292
LEVEL II CDCR Male Population	44,578	44,949	46,677	47,448	46,936	40,381	41,743	40,794	42,550	40,451	40,731	40,587	38,883	38,449	37,764	37,018
LEVEL II Census Rate	42.66	49.29	54.42	51.84	53.06	58.76	60.55	64.68	71.66	75.86	69.47	69.47	69.47	69.47	69.47	69.47
LEVEL II TOTAL ADC	1901.8	2215.6	2540.2	2459.5	2490.4	2373.0	2527.7	2638.5	3049.3	3068.4	2,829.7	2,819.7	2,701.3	2,671.2	2,623.6	2,571.7
LEVEL II Bed Need (95% Occ)	2,002	2,332	2,674	2,589	2,621	2,498	2,661	2,777	3,210	3,230	2,979	2,968	2,843	2,812	2,762	2,707
LEVEL III CDCR Male Population	25,035	26,122	24,029	21,736	20,369	16,135	16,201	14,886	13,090	13,237	13,292	13,079	12,488	12,743	12,899	13,008
LEVEL III Census Rate	42.96	46.79	50.31	46.58	46.34	47.28	43.49	49.47	71.84	71.99	73.35	73.35	73.35	73.35	73.35	73.35
LEVEL III TOTAL ADC	1075.4	1222.4	1208.8	1012.5	943.8	762.8	704.6	736.4	940.4	953.0	975.0	959.3	916.0	934.7	946.1	954.1
LEVEL III Bed Need (95% Occ)	1,132	1,287	1,272	1,066	994	803	742	775	990	1,003	1,026	1,010	964	984	996	1,004
LEVEL IV CDCR Male Population	27,770	28,573	28,789	27,711	26,860	22,115	22,560	20,611	18,634	17,024	16,808	16,953	16,049	16,230	16,125	15,843
LEVEL IV Census Rate	70.26	82.69	88.75	76.10	69.80	85.40	87.47	97.61	130.48	149.42	173.90	173.90	173.90	173.90	173.90	173.90
LEVEL IV TOTAL ADC	1951.0	2362.6	2555.1	2108.8	1874.7	1888.7	1973.3	2011.9	2431.3	2543.7	2,922.8	2,948.1	2,790.9	2,822.3	2,804.1	2,755.0
LEVEL IV Bed Need (95% Occ)	2,054	2,487	2,690	2,220	1,973	1,988	2,077	2,118	2,559	2,678	3,077	3,103	2,938	2,971	2,952	2,900
RC CDCR Male Population	10,208	10,752	10,737	9,606	9,593	3,132	6,051	6,836	5,810	4,583	4,183	4,223	4,082	4,091	4,132	4,121
RC Census Rate	24.74	23.35	18.88	16.21	15.71	35.09	27.45	26.87	40.66	43.79	43.90	43.90	43.90	43.90	43.90	43.90
RC TOTAL ADC	252.6	251.0	202.7	155.7	150.7	109.9	166.1	183.7	236.2	200.7	183.6	300.1	185.4	179.2	179.6	181.4
RC Bed Need (95% Occ)	266	264	213	164	159	116	175	193	249	211	193	316	195	189	189	191
<b>Total EOP-GP Bed Need</b>	<b>5,663</b>	<b>6,578</b>	<b>7,127</b>	<b>6,377</b>	<b>6,101</b>	<b>5,645</b>	<b>5,937</b>	<b>6,177</b>	<b>7,379</b>	<b>7,443</b>	<b>7,577</b>	<b>7,699</b>	<b>7,237</b>	<b>7,245</b>	<b>7,190</b>	<b>7,095</b>
Adj for APP/ICF/PSU PL	12.3	25.5	11.1	18.4	34.6	22.4	10.0	26.4	17.2	19.8	17.0	20.0	20.0	20.0	15.0	15.0
"Trued" Bed Need for APP/ICF/PSU	5,651	6,552	7,116	6,358	6,067	5,622	5,927	6,151	7,362	7,423	7,560	7,679	7,217	7,225	7,175	7,080

Forecast based on Fall 2025	7,383	7,110	7,064	6,974	6,884
Forecast based on Spring 2025	7,324	7,499	7,446	7,315	
Forecast based on Fall 2024	6,977	6,892	6,783	6,636	

CDCR EOP-GP beds increased to an average of 7,674 beds for FY 2025 within 13 of the 32 male institutions. The Spring 2026 Study forecasts a bed need of 7,699 for FY 2026, which is 316 beds higher (4.3%) than the Fall study. The new study trends 3.0% higher than the Fall study over the forecast years.

The “truing” analysis shows beds used by those incarcerated-patients on the pending list that could be freed-up once adequate inpatient capacities become available in the future.

## RESTRICTED HOUSING UNIT ENHANCED OUTPATIENT PROGRAM - RHE

TABLE 10. MALE RESTRICTED HOUSING UNIT ENHANCED OUTPATIENT PROGRAM (RHE) FORECAST TABLE

RHE - Males	--- ACTUAL ---							Jul-Dec	--- FORECAST ---				
Fiscal Year Ending (June 30)	2019	2020	2021	2022	2023	2024	2025	2026	2026	2027	2028	2029	2030
CDCR Total Male Population	121,939	118,494	93,311	95,890	92,051	90,421	87,721	87,102	86,950	83,378	83,185	82,608	81,693
Census Rate	5.45	5.21	7.20	7.62	8.41	7.99	9.09	9.71	9.78	9.68	9.80	9.81	9.77
Avg Program Census	610.3	539.5	493.5	595.5	689.1	658.8	708.2	760.2					
Avg Pending List	54.6	78.1	178.8	135.3	85.3	63.8	89.5	86.0					
Total Avg Daily Census (ADC)	664.8	617.6	672.3	730.8	774.4	722.6	797.7	846.2	850.4	806.9	814.8	810.4	798.3
Bed Need (95% Occ)	700	650	708	769	815	761	840	891	895	849	858	853	840

Forecast Based on Fall 2025	809	795	795	786	777
Forecast Based on Spring 2025	794	813	804	792	
Forecast Based on Fall 2024	705	703	688	677	

Starting in November 2023, the EOP-ASU and PSU beds transitioned to the RHE program and CDCR has since provided consolidated data. The Spring 2026 study estimates a need of 895 beds for FY 2026, which is 86 beds higher (10.6%) than the Fall study.

The average RHE census rate increased significantly by 6.8% between FY 2025 and the first six months of FY 2026.

TABLE 11. MALE RHE DISTRIBUTION BY CLASSIFICATION LEVEL TABLE

Classification Level	Distribution %	Est. Total ADC Distribution	CDCR Population @ 9/30/25	Census Rates (Spring 2026)	% Change Spring '26 - Fall '25	Census Rates (Fall 2025)	Census Rates (Spring 2025)	Census Rates (Fall 2024)	Census Rates (Spring 2024)	% Change Spring 26 - Spring 24
Level IV	80.5%	681.2	16,808	40.53	6.7%	37.98	36.78	29.02	31.10	30.3%
Level III	9.7%	82.0	13,292	6.17	5.6%	5.84	5.67	6.09	6.06	1.7%
Level II	8.6%	72.9	40,731	1.79	12.9%	1.58	1.52	2.04	2.26	-20.8%
Level I	1.2%	10.1	8,379	1.20	10.2%	1.09	0.96	2.05	1.74	-31.1%
<b>Total</b>	<b>100.0%</b>	<b>846.2</b>	<b>87,102</b>	<b>9.71</b>	<b>6.8%</b>	<b>9.09</b>	<b>8.69</b>	<b>7.99</b>	<b>8.87</b>	<b>9.5%</b>

TABLE 12. MALE CCCMS FORECAST TABLE

CCCMS - MALE	--- ACTUAL ---								Jul-Dec	--- FORECAST ---				
Fiscal Year Ending (June 30)	2019	2020	2021	2022	2023	2024	2025	2026	2026	2027	2028	2029	2030	
CDCR Total Male Population	121,939	118,494	93,311	95,890	92,051	90,421	87,721	87,102	86,950	83,378	83,185	82,608	81,693	
Census Rate	216.0	215.5	226.4	235.0	249.8	258.3	277.6	291.9	292.1	291.4	292.0	292.1	291.9	
Total Avg Daily Census (ADC)	26,344	25,538	21,128	22,538	22,990	23,354	24,349	25,427	25,398	24,299	24,290	24,131	23,843	
									Forecast Based on Fall 2025	23,658	23,194	23,040	22,774	22,495
									Forecast Based on Spring 2025	23,815	24,291	24,075	23,646	
									Forecast Based on Fall 2024	21,850	21,995	21,499	20,972	

TABLE 13. MALE CCCMS DISTRIBUTION BY CLASSIFICATION LEVEL TABLE

Classification Level	Distribution %	Est. Total ADC Distribution	CDCR Population @ 9/30/25	Census Rates (Spring 2026)	% Change Spring '26 - Fall '25	Census Rates (Fall 2025)	Census Rates (Fall 2024)	Census Rates (Fall 2023)	Census Rates (Fall 2022)	Census Rates (Fall 2021)	Census Rates (Fall 2020)	Census Rates (Fall 2019)	Census Rates (Fall 2018)	Census Rates (Fall 2017)	Census Rates (Fall 2016)	% Change Spring 26 - Fall 16
Level IV	26.7%	6,786	16,808	403.7	10.3%	366.1	313.6	279.7	267.7	284.3	257.3	261.0	241.7	243.4	259.2	55.7%
Level III	15.0%	3,819	13,292	287.3	7.3%	267.7	254.5	214.9	206.9	206.7	189.1	202.0	217.3	229.5	242.5	18.5%
Level II	44.3%	11,262	40,731	276.5	1.4%	272.6	251.6	252.4	247.5	233.2	226.0	227.2	230.2	236.9	231.8	19.3%
Level I	7.0%	1,778	8,379	212.2	9.2%	194.4	222.2	164.4	151.8	92.4	121.7	111.4	97.7	94.4	92.7	129.0%
RCs	7.0%	1,782	4,183	426.1	8.1%	394.1	314.1	325.5	245.1	350.5	240.6	242.7	229.9	212.4	216.8	96.5%
Total	100.0%	25,427	87,102	291.9	5.2%	277.6	258.3	246.9	235.0	226.4	213.8	216.0	214.5	219.0	219.6	32.9%

The CCCMS capacity increased by 900 beds in August 2025. CDCR had an average capacity of 25,062 for male CCCMS incarcerated patients within 28 of the 32 male institutions for the first 6 months of FY 2026. The Spring 2026 Study calculated a bed need (i.e., average census) of 25,398 for FY 2026 or 1,740 (7.4%) greater bed need than in the Fall study. The census rate increased 5.2% between FY 2025-2026. The forecast increased an average of 5.9% over the forecast years compared to the Fall study. The CCCMS census rate has increased every year since 2018.

## FEMALE PROGRAM FORECASTS

### ACUTE AND INTERMEDIATE INPATIENT PROGRAM (APP/ICF)

TABLE 14. FEMALE APP/ICF FORECAST TABLE

APP/ICF - FEMALE	--- ACTUAL ---							Jul-Dec	--- FORECAST ---				
Fiscal Year	2019	2020	2021	2022	2023	2024	2025	2026	2026	2027	2028	2029	2030
CDCR Total Female Population	5,770	5,533	3,640	3,839	3,656	3,767	3,637	3,594	3,642	3,702	3,807	3,795	3,842
Census Rate	9.65	9.92	10.95	9.31	11.80	10.46	13.40	11.26	11.3	11.3	11.3	11.3	11.3
Avg Program Census (PSH)	11.4	13.6	10.7	10.2	7.3	4.7	7.7	7.0					
Avg Program Census (CIW)	41.9	35.0	28.4	24.3	33.4	32.1	35.4	30.4					
Avg Pending List	2.4	2.2	0.7	1.3	2.4	2.6	5.6	3.1					
Total Avg Daily Census (ADC)	55.7	54.9	39.8	35.7	43.1	39.4	48.7	40.5	41.0	41.7	42.9	42.7	43.3
Bed Need (90% Occ)	62	61	44	40	48	44	54	45	46	46	48	47	48

Forecast Based on Fall 2025	54	55	55	56	55
Forecast Based on Spring 2025	51	53	53	54	
Forecast Based on Fall 2024	43	43	42	42	

CDCR currently operates a 45-bed PIP at California Institution for Women (CIW) for female incarcerated patients requiring APP or ICF-High custody LOC. Additionally, DSH operates 30 unlocked dormitory beds at Patton State Hospital (PSH) for female CDCR incarcerated patients. The Spring 2026 study forecasts a bed need of 46 for FY 2026, or 8 beds lower than the Fall study.

The new bed need forecast was lower than the Fall study averaging 8 beds lower (14.8%) throughout the forecast years.

The census rate decreased 16% from the Fall study. No CRAF adjustment was applied.

## MENTAL HEALTH CRISIS BEDS (MHCB)

TABLE 15. FEMALE MHCB FORECAST TABLE

MHCB - FEMALE	--- ACTUAL ---										Jul-Dec	--- FORECAST ---				
Fiscal Year Ending (June 30)	2016	2017	2018	2019	2020	2021	2022	2023	2024	2025	2026	2026	2027	2028	2029	2030
CDCR Total Female Population	5,729	5,869	5,849	5,770	5,533	3,640	3,839	3,656	3,767	3,637	3,594	3,642	3,702	3,807	3,795	3,842
Census Rate	3.78	4.76	4.63	4.31	4.09	2.71	3.38	3.75	4.01	4.66	4.66	4.7	4.7	4.7	4.7	4.7
Avg Program Census	16.3	17.7	17.5	20.4	21.4	9.2	12.2	12.7	14.0	15.9	15.8					
Avg Pending List	5.3	10.2	9.5	4.5	1.2	0.7	0.8	1.1	1.1	1.0	1.0					
Total Avg Daily Census (ADC)	21.6	28.0	27.1	24.8	22.7	9.9	13.0	13.7	15.1	16.9	16.7	17.0	17.2	17.7	17.7	17.9
Bed Need (95% Occ)	24	31	30	28	25	11	14	15	17	19	19	19	19	20	20	20
Forecast Based on Fall 2025												19	19	19	20	19
Forecast Based on Spring 2025												19	19	19	20	
Forecast Based on Fall 2024												16	16	16	16	

CDCR has a current capacity of 41 MHCBs for female patients at CIW and CCWF. The Spring 2026 study forecasts a bed need of 19, the same as the Fall study. Over the forecast years the two study forecasts are very similar. No CRAF adjustment was applied.

## ENHANCED OUTPATIENT PROGRAM (EOP) – GENERAL POPULATION (EOP-GP)

TABLE 16. FEMALE EOP-GP FORECAST TABLE

EOP-GP - FEMALE	--- ACTUAL ---								Jul-Dec	--- FORECAST ---				
Fiscal Year Ending (June 30)	2019	2020	2021	2022	2023	2024	2025	2026	2026	2027	2028	2029	2030	
CDCR Total Female Population	5,770	5,533	3,640	3,839	3,656	3,767	3,637	3,594	3,642	3,702	3,807	3,795	3,842	
Census Rate	34.44	30.02	34.18	31.86	34.57	36.91	42.57	42.31	42.31	42.31	42.31	42.31	42.31	
Total Avg Daily Census (ADC)	198.7	166.1	124.4	122.3	126.4	139.1	154.8	152.1	154.1	156.6	161.1	160.6	162.6	
Bed Need (95% Occ)	209	175	131	129	133	146	163	160	162	165	170	169	171	
Forecast Based on Fall 2025									163	165	166	169	166	
Forecast Based on Spring 2025									170	177	177	178		
Forecast Based on Fall 2024									143	142	142	139		

CDCR has a current capacity of 225 beds for female EOP patients within 2 female institutions. The Spring study forecasts a similar bed need to the Fall study with 162 beds for FY 2026, which is only 1 bed lower than the Fall study. The forecast years are about 1.0% higher.

## RESTRICTED HOUSING UNIT ENHANCED OUTPATIENT PROGRAM (RHE)

TABLE 17. FEMALE RESTRICTED HOUSING UNIT ENHANCED OUTPATIENT PROGRAM (RHE) FORECAST TABLE

RHE - FEMALE	--- ACTUAL ---						Jul-Dec	--- FORECAST ---					
Fiscal Year Ending (June 30)	2019	2020	2021	2022	2023	2024	2025	2026	2026	2027	2028	2029	2030
CDCR Total Female Population	5,770	5,533	3,640	3,839	3,656	3,767	3,637	3,594	3,642	3,702	3,807	3,795	3,842
Census Rate	3.33	2.72	2.35	5.02	4.37	2.41	2.40	3.02	3.02	3.02	3.02	3.02	3.02
Total Avg Daily Census (ADC)	19.2	15.1	8.5	19.3	16.0	9.1	8.7	10.8	11.0	11.2	11.5	11.5	11.6
Bed Need (95% Occ)	20	16	9	20	17	10	9	11	12	12	12	12	12
Forecast Based on Fall 2025									9	9	9	10	9
Forecast Based on Spring 2025									9	9	9	9	
Forecast Based on Fall 2024									9	9	9	9	

Starting in November 2023, the EOP-ASU and PSU beds were incorporated into the RHE program and CDCR provided consolidated data since November 2023. CDCR had a capacity of 30 beds for women in RHE. The Spring study forecasts a bed need of 12 for FY 2026, which is about 3 beds (33.3%) higher than the previous Fall forecast. The forecasted years averaged 28% higher than the Fall study. No CRAF adjustment was applied.

## CORRECTIONAL CLINICAL CASE MANAGEMENT SYSTEM (CCCMS)

TABLE 18. FEMALE CCCMS FORECAST TABLE

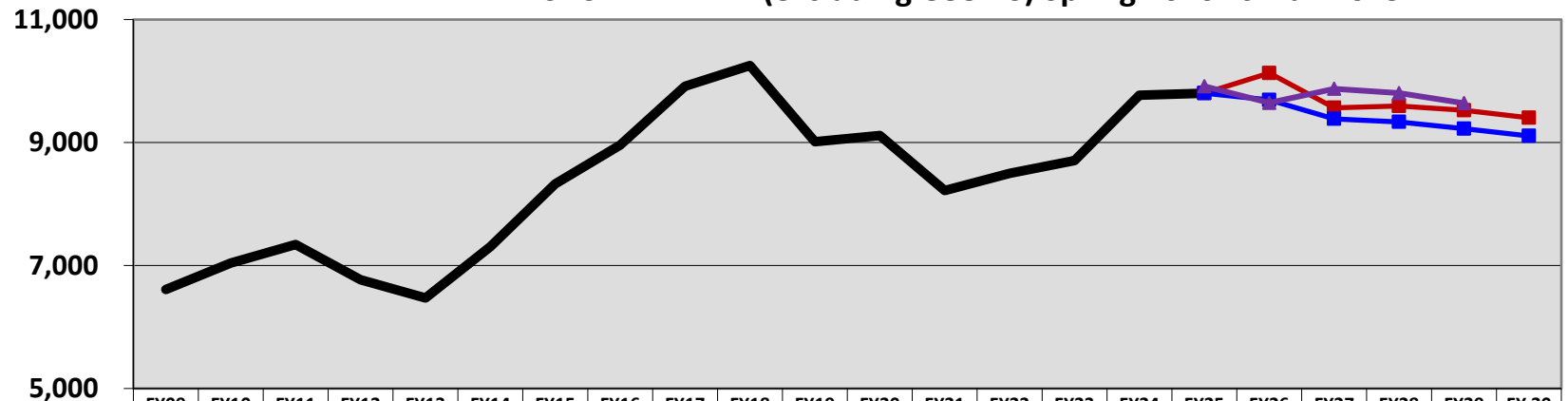
CCCMS - FEMALE	--- ACTUAL ---						Jul-Dec	--- FORECAST ---					
Fiscal Year Ending (June 30)	2019	2020	2021	2022	2023	2024	2025	2026	2026	2027	2028	2029	2030
CDCR Total Female Population	5,770	5,533	3,640	3,839	3,656	3,767	3,637	3,594	3,642	3,702	3,807	3,795	3,842
Census Rate	384.6	387.2	445.4	471.7	473.4	480.6	497.8	526.1	526.1	526.1	526.1	526.1	526.1
Total Avg Daily Census (ADC)	2,219	2,142	1,621	1,811	1,731	1,811	1,811	1,891	1,916	1,948	2,003	1,996	2,021
Forecast Based on Fall 2025									1,862	1,886	1,906	1,939	1,904
Forecast Based on Spring 2025									1,908	1,982	1,991	2,001	
Forecast Based on Fall 2024									1,773	1,761	1,755	1,726	

CDCR had an average capacity in the first half of FY 2026 of 1,862 beds for female CCCMS patients within CCWF and CIW. The Spring 2026 study projects a bed need of 1,916 for FY 2026, which is 54 beds higher (2.9%) than the Spring forecast. Over the forecast years, there is a 4.1% higher census rate than the Fall study forecast. No CRAF adjustment was applied.

## CONCLUSION

The Spring 2026 Study (excluding CCCMS) forecasts a higher total bed need compared to the Fall 2025 study for FY 2026, by 438 beds (4.5%). The Spring study trends 3.1% higher throughout the forecast years.

**MHSDS BED NEED (excluding CCCMS) Spring 2026 vs. Fall 2025**



	FY09	FY10	FY11	FY12	FY13	FY14	FY15	FY16	FY17	FY18	FY19	FY20	FY21	FY22	FY23	FY24	FY25	FY26	FY27	FY28	FY29	FY 30
Historical Bed Need	6,610	7,040	7,341	6,767	6,472	7,306	8,329	8,959	9,916	10,25	9,012	9,115	8,220	8,498	8,705	9,771	9,802					
Bed Need Spring 2026																	9,802	10,113	9,565	9,593	9,524	9,402
Bed Need Fall 2025																	9,802	9,692	9,384	9,335	9,225	9,107
Bed Need Spring 2025																	9,915	9,645	9,874	9,804	9,639	